
Presentation v.1

November 2018

FIH + Hockey India

Facilities Workshop

S106

Basic Infrastructure Requirements

Facilities Workshop

Dion Gosling – Principal Architect

S106

Hello

Why are we here?

S106



To share a story
about a little boy...

SUVA GRAMMAR OLD BOYS' CRICKET CLUB

PREMIERS SENIOR CHAMPIONSHIP 1936-37

WINNERS BLACK & WHITE CUP.



STANDING: J. GOBLING E. CALMERS C. PALMER A. WENDT F. PALMER J. RADDOCK
BITTING: H. RADDOCK H. EDMONDS (Capt.) A. S. DE MONTALK (President) C. ROBINSON (Vice Capt.) E. JEFFRIES
FRONT: C. GRAIBIE P. RADDOCK ABSENT: J. BENNIE K. BHABANI R. CAKODAU G. HARWOOD

Athlete | Coach | Player |
Sports Psychologist

BLACK STICK 1994-2005

2004 ATHENS OLYMPIC GAMES

*COMMONWEALTH GAMES SILVER MEDALIST –
MANCHESTER 2002*

1998 + 2002 HOCKEY WORLD CUPS

... then

**Sports Architect | Designer | Masterplanner | Project Manager |
Coach | Administrator | Strategic Thinker**

Thinking of How to Connect...

An aerial photograph of a sports complex. In the center is a baseball field with a green infield and brown outfield. To the left, there are several large, modern, multi-story buildings with white facades and grid-like window patterns. The background is a dense forest of green trees under a blue sky with light clouds.

**sport
+
architecture**

**Sports Architect | Designer | Masterplanner | Project Manager |
Coach | Administrator | Strategic Thinker**

Creating Opportunities to Connect...

An aerial photograph of a sports complex. In the center is a large baseball field with a green infield and brown outfield. To the left and right are several modern, multi-story buildings with glass facades and balconies. The background is a dense forest of green trees under a blue sky with light clouds.

**people
+
organisations**

Our Challenge?

The Challenge

To develop a hockey academy

Understand basic infrastructure

More Than That

Create a Network of Sustainable
Hockey Facilities + Infrastructure to
Support People

The Idea

What is the basis for your
New Opportunity?

The Idea – For our facilities

Inspired by hockey

Imagine the place you **work**.

Imagine your **home**.

Imagine that **in-between** place...

The Idea

The In-Between Place



Concept

The Hockey

Facility as our

Third Place...

Concept

The Hockey

Academy as our

Third Home...

What is the Third Place

Somewhere I go to be *social*.

Somewhere I go to *learn*.

Somewhere I can be *safe*.

Somewhere I can strive to *be better*.

Somewhere that is *accessible*.

It is a place

... that creates us stories.

**... is at the intersection of sport and our
community...**

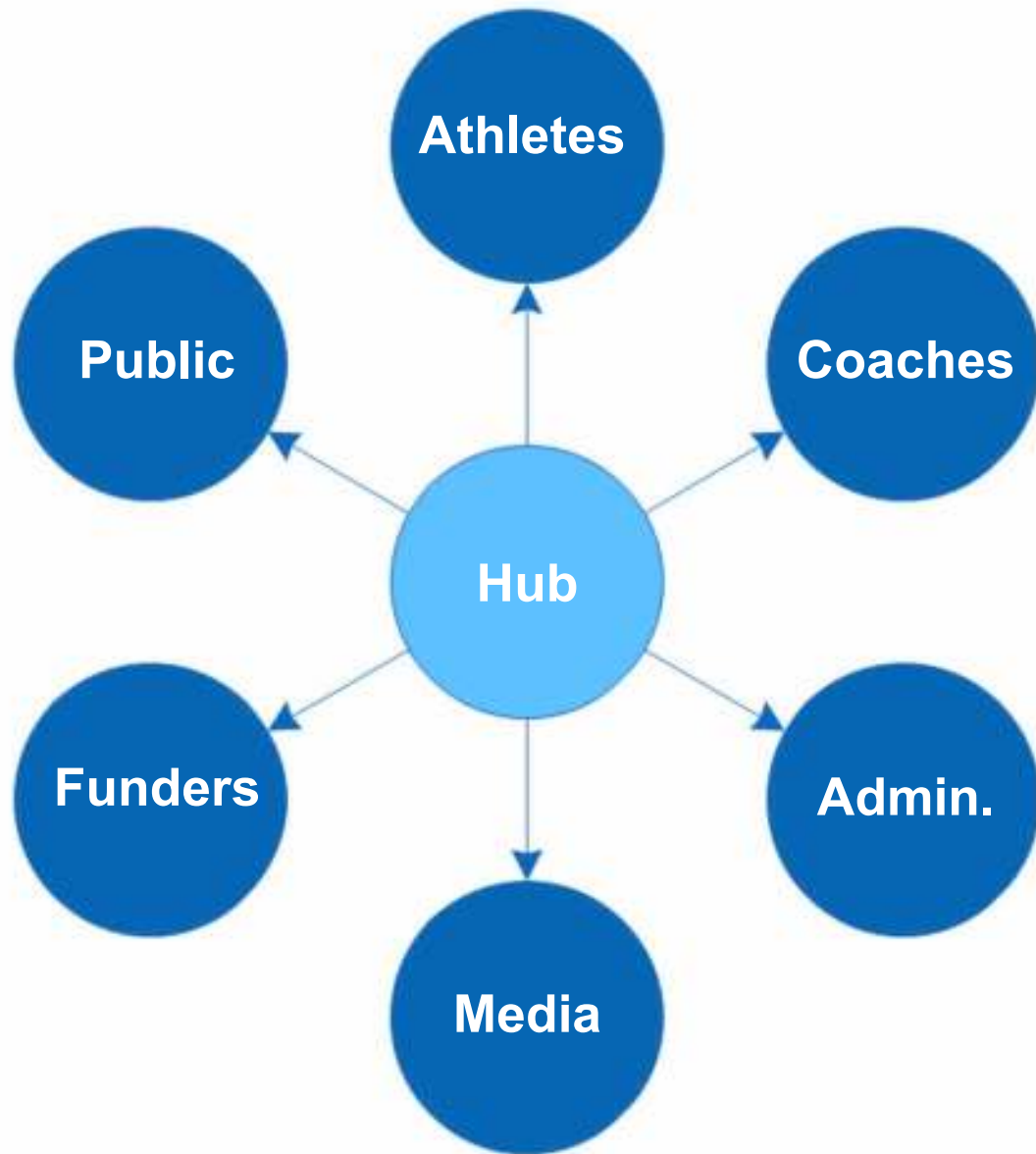
Inspired by hockey

The Idea

... It's about...

People + Place

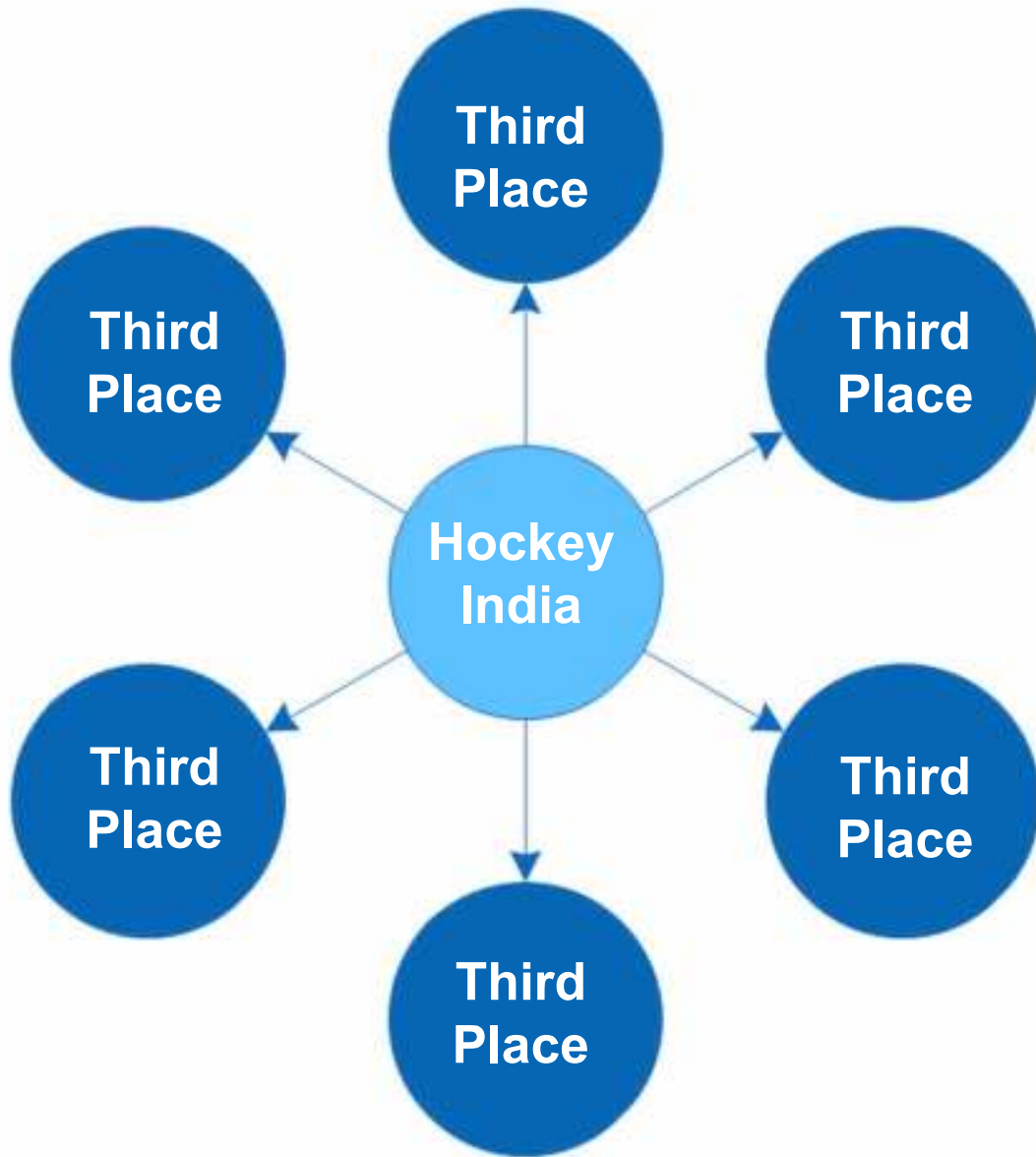
S106



Network

Facilities Development

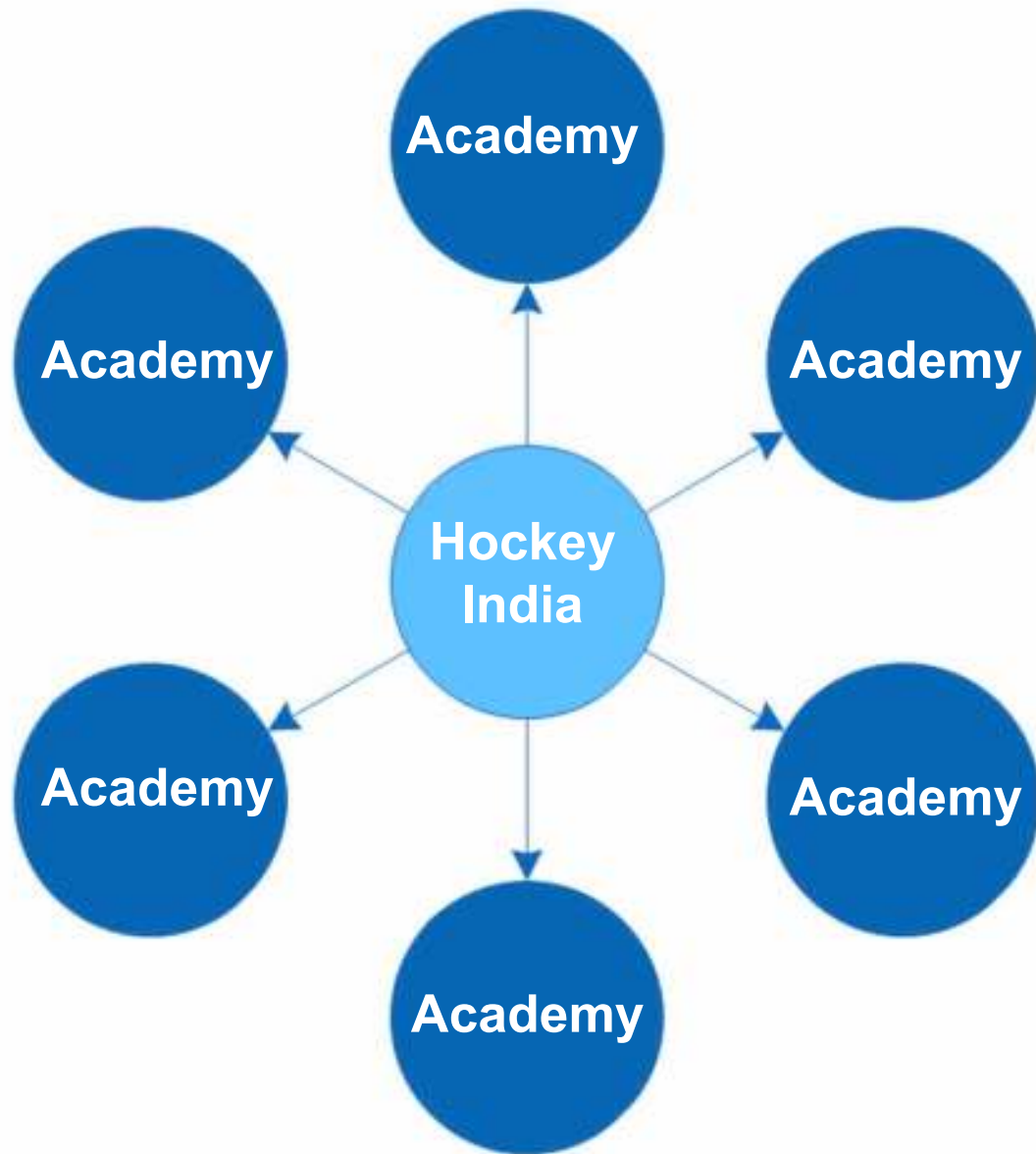
- _ Shared
- _ Social
- _ Organised
- _ Planned + Strategic
- _ Hockey India Leadership
- _ FIH Supported
- _ Collaborative



Network

Facilities Development

What does your
Third Place
look like?



Network

Facilities Development

+ infrastructure

_Size

_Scale

_Model

_Delivery

_Local

What is Infrastructure

What is the Third Place
made of?

+ masterplan?



OF WORKS

RETAIN EXISTING TREES

MCMAHON DRIVE

ATHLETICS A1

ATHLETICS A2

HOCKEY H1

HOCKEY H2

FUTURE HOCKEY H2

FUTURE COMMUNITY FIELDS

FUTURE COMMUNITY FIELDS

FUTURE TENNIS

TENNIS 1:3

SPORTS HUB

CHANGE VILLAGE

RUGBY LEAGUE R1

RUGBY LEAGUE R2

COMMUNITY FIELD G5

COMMUNITY FIELD G6

AUGUSTINE DRIVE

TEMPLETONS ROAD

An aerial photograph showing two large sports stadiums. The foreground stadium is under construction, with its seating bowl partially completed and a complex steel truss roof structure visible on the left side. The field is dark and appears to be covered in water or a protective layer. In the background, a smaller, more traditional stadium with a complete seating bowl and a central building is visible. The surrounding area includes trees, a road, and residential buildings.

+ stadia?

**+ commercial
development?**





+ integrated housing?

office?



+ field of play?



+ education spaces?



+ retail?



+ roads?





+ programmes?



+ it is everything...

To develop a hockey academy

We require basic infrastructure

How did we get the Kiwi boy to play at the Olympic Games?

Basic Infrastructure Requirements

What is this for Hockey India?

Sport and academy projects are unique:

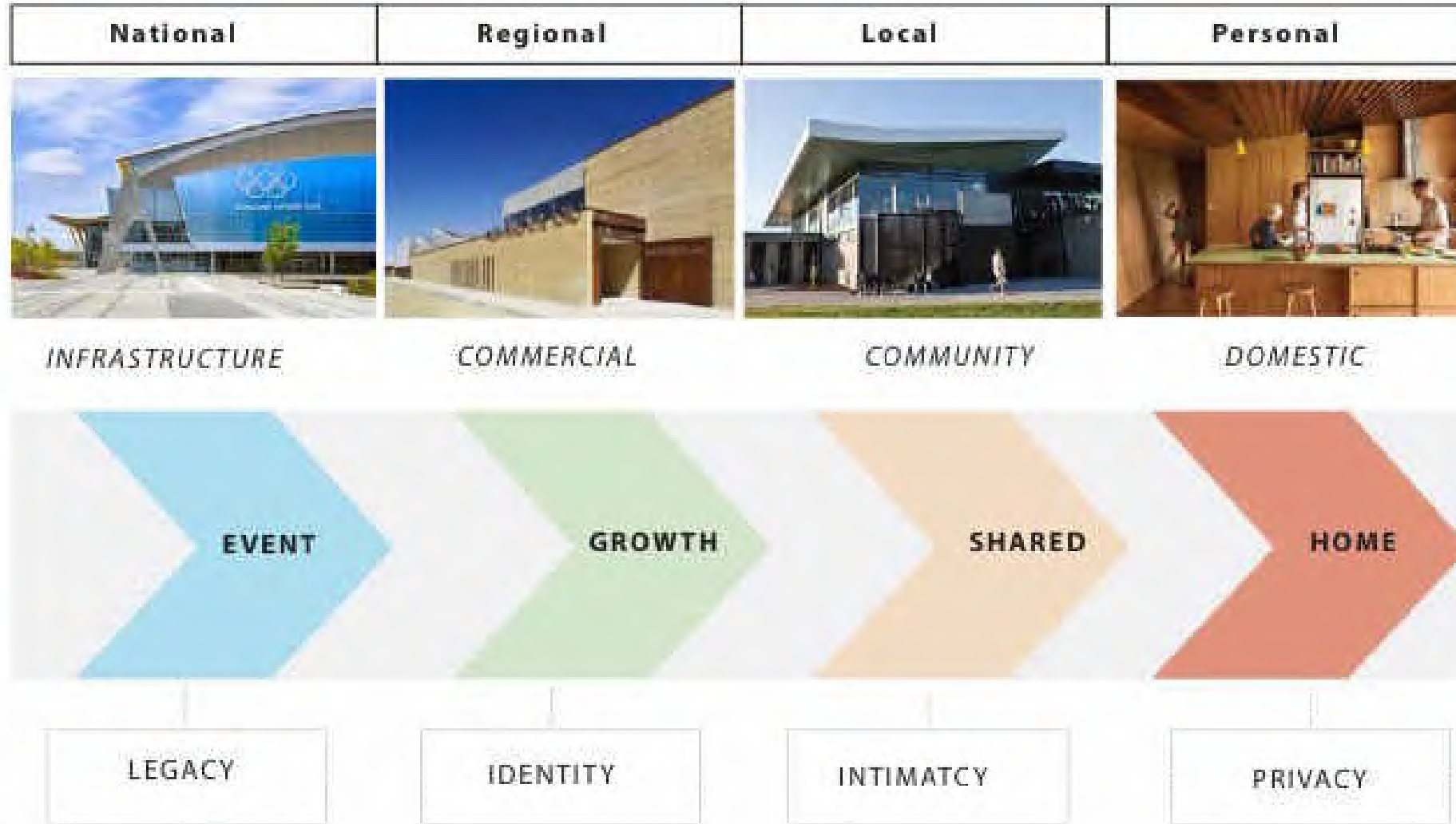
Where do your projects sit within your building types

What are the challenges and options

What have you learned so far

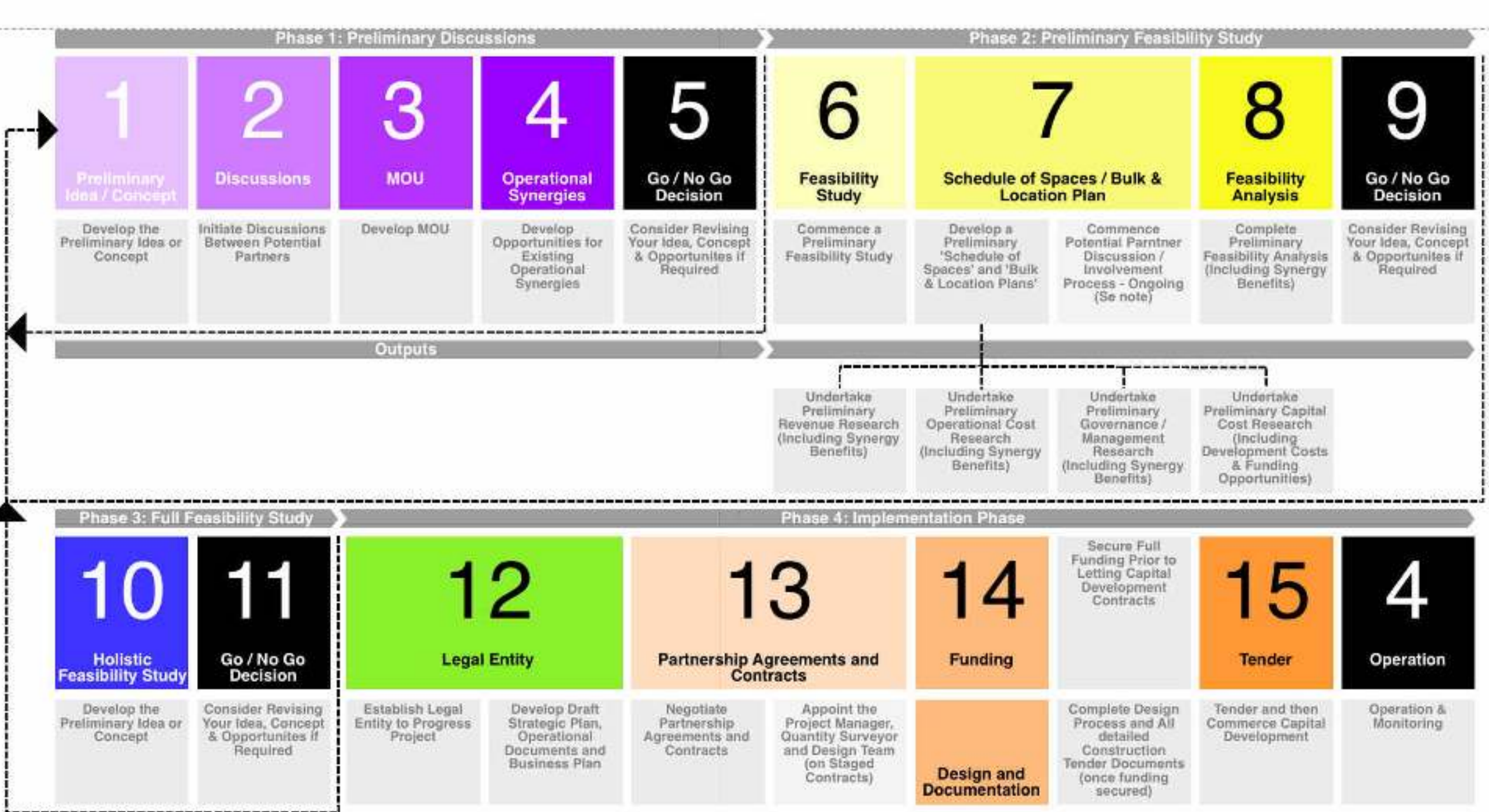
Where do you think you can go to from here

The Hierarchy - Where do projects sit?



The Impactors - Challenges and Options?





_ Clear purpose

_ Needs-based

_ Reaches the audience

_ Strong Governance

_ Local delivery supported by national & international talent

_ Sustainable funding sources

The social plan = sustainability

What are the basic components

Basic Development v
Elite Centre of Excellence



physical_INFRASTRUCTURE



*soft*_INFRASTRUCTURE



active **PARTICIPATION**



COMMUNITY_engagement



help_DISPLACED GROUPS



social capital **PEOPLE**



*sharing_***EFFICIENT USE**



financial_MODEL



fit for purpose **FUNCTION**



... CONNECTIONS
*high performance vs grass-
roots community*



... CONNECTIONS

*Creating an Olympic
experience on the Community
level*

To develop a hockey academy

What is the social and financial balance between High Performance and Community?

How do we Scale it

How do we Design for it

How do we Get Best Value for Money

**How do we
Better Connect
High Performance
and Community**

S106

Basic Infrastructure Requirements

Facilities Workshop

Case Studies

S106

Basic Infrastructure Requirements

Facilities Workshop

Nga Puna Wai

Regional Sports Hub_Christchurch_NZ



COMMUNITY FIELD G5

COMMUNITY FIELD G6

FUTURE TENNIS

TENNIS 1:3

STAGE 1 EXTENT OF WORKS

RETAIN EXISTING TREES

CHANGE VILLAGE

RUGBY LEAGUE R1

RUGBY LEAGUE R2

SPORTS HUB

ATHLETICS A1

HOCKEY H1

ATHLETICS A2

HOCKEY H2

FUTURE HOCKEY H2

FUTURE COMMUNITY FIELDS

FUTURE COMMUNITY FIELDS

"The Olympic Park for the Community."

MCMAHON DRIVE

AUGUSTINE DRIVE

TEMPLETONS ROAD

The Story

Feb_2011

**Sports lost their homes
& identity, but didn't
lose traditions, values
and ability to re-build.**



Partners + Funders

Anchor Sports

- Athletics Canterbury
- Canterbury Hockey Assn.
- Canterbury Tennis
- Canterbury Ruby League

Key Organisations

- Canterbury A&P
- Sport Canterbury
- HPSNZ
- Ngai Tahu
- Canterbury Football
- Christchurch Metro Cricket
- Canterbury Rugby Union

Community

- Local Residents

Christchurch City Council

- Major Facilities Rebuild Unit
- Recreation & Sports Unit
- Planning & Strategy
- Transportation & Infrastructure
- City Environments
- Network Planning Greenspace
- Property & Leasing

hockey

- NZD\$120M Masterplan | \$50M + Stage 1
- 32 hectares of reserve – best use of space
- Co-location & multi-use with other sports
- A Sports Hub for sporting codes
- Playing surfaces as priority
- Cater for the day-to-day needs of the recreational & educational communities
- Overlay national & international events

\$120m

masterplan

\$50m+

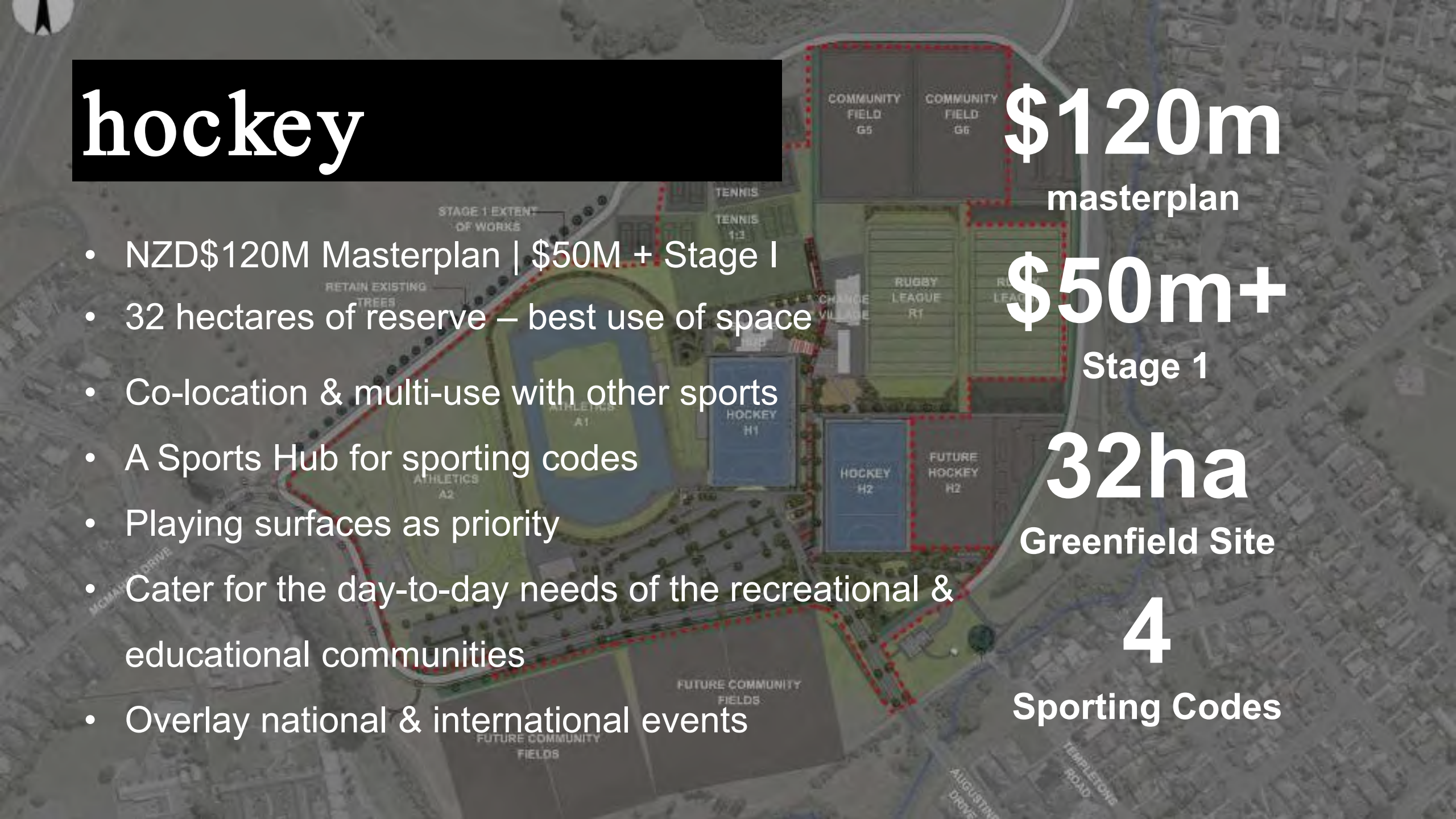
Stage 1

32ha

Greenfield Site

4

Sporting Codes



hockey

- 3 FIH Global Elite turf surfaces
- Hockey 1 arena capacity - 3,500 spectators
- Permanent seating for 500
- Temporary seating for further 800
- Video analysis towers & facilities
- Balance of spectators on boulevard
- Hosting of regional + national + international events
- Administration Offices - shared
- Double-sided covered seating with athletics

3

FIH Certified Water Turfs

3,500

Hockey H1 Stadium
Pro League

500

Covered Seating

Basic Infrastructure Requirements

Facilities Workshop

Colin Maiden Park

Local Hockey Turf_Auckland_NZ

S106

The Story

2010

Club wanting to “Go Home” to grow hockey in the local community, and provide for local elite player development.

The Vision

Local Club + Regional Elite Academy with Community Programmes





Support from Regional Hockey + Local Council

Cricket

Swimtastic

Covered Tennis

Artificial Hockey Turf Location

Outdoor Netball

Indoor Netball Courts

Tennis Auckland

Oceania Football Federation

The Data

- Hockey turfs were a **strategic priority for the region** to meet demand – there was a Regional Facility Plan developed
- **Feasibility report** for CMP established the current and future need
- Hockey **partnership funding** with Council for DC contribution to 55% based on growth – hockey grown 24% nationally in 3 years
- Hockey is regarded as a **leader in facility development** – for playing surfaces development & renewals
- **Endorsement** under the Council Precinct Plan & Projects Works Plan for facility
- **Engagement with local schools** into the facility in partnership with rugby - 6,000 participants for hockey in Auckland – junior / secondary / open grades

The Infrastructure



- Two new artificial hockey turfs – FIH Global Standard
- Two turf training areas – 64m x 15m
- Temporary seating areas – 500capacity
- Muster area between turfs – safe zone
- Carparking – 35spaces
- Field lighting – 500lux
- Video analysis – dugouts - fencing
- Hosting club/community – regional – international fixtures

Project Cost

\$7.0M

- New turfs - \$4.23M (includes lighting, fencing & irrigation)
- Warm Up / Training Areas - \$450k (includes lighting & fencing)
- Circulation - \$100k
- Carpark - \$1.0M
- Professional fees and consenting (10%) - \$500k
- General contingency (10%) - \$545k

Funding Plan

- Auckland Council – Development Contributions - \$2M
- Community grants: \$750k - \$1.9M
- Club and Regional Sports Trust: \$120k
- Development components to suit funders

Funder	Worst case	Mid - Best case	Best Case
Lottery Community Facilities Fund	\$ 300,000	\$ 500,000	\$ 700,000
Lion Foundation	\$ 100,000	\$ 200,000	\$ 300,000
NZCT	\$ 200,000	\$ 300,000	\$ 400,000
Trillian Trust	\$ 50,000	\$ 100,000	\$ 100,000
Four Winds Foundation	\$ 25,000	\$ 50,000	\$ 100,000
NZ Racing Board	\$ 25,000	\$ 50,000	\$ 100,000
Youthtown Inc	\$ 25,000	\$ 50,000	\$ 100,000
Mt Wellington Foundation	\$ 10,000	\$ 25,000	\$ 50,000
North & South Trust	\$ 10,000	\$ 25,000	\$ 25,000
Other Funders	\$ 10,000	\$ 50,000	\$ 50,000
Total	\$ 755,000	\$ 1,350,000	\$ 1,925,000

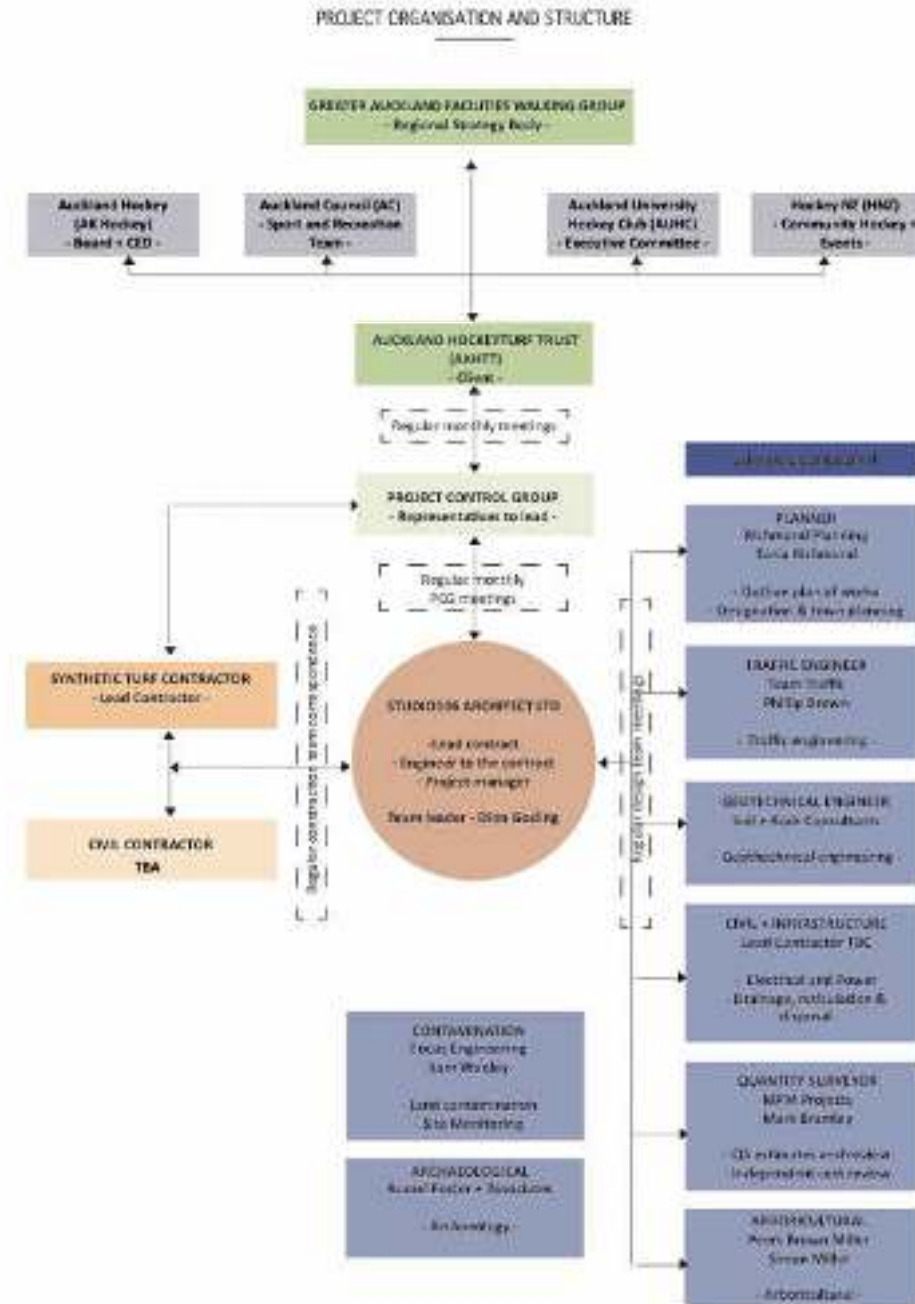
Foundation North TBC: Excludes: Playing Surfaces, Car Parks, Landscaping and Floodlights.

Worst Case v Best Case

S106

Structure

- Regional Turf Trust Entity has lease & funding agreement with Council
- Club has access agreement
- Use of adjacent rugby clubrooms as social & admin. centre
- Coaching & Development Director to be appointed
- Revenue to be generated by all users, incl. Hockey NZ & other sports



Basic Infrastructure Requirements

Facilities Workshop

Wans Smol Bag

Local Hockey Turf_Port Vila_Vanuatu

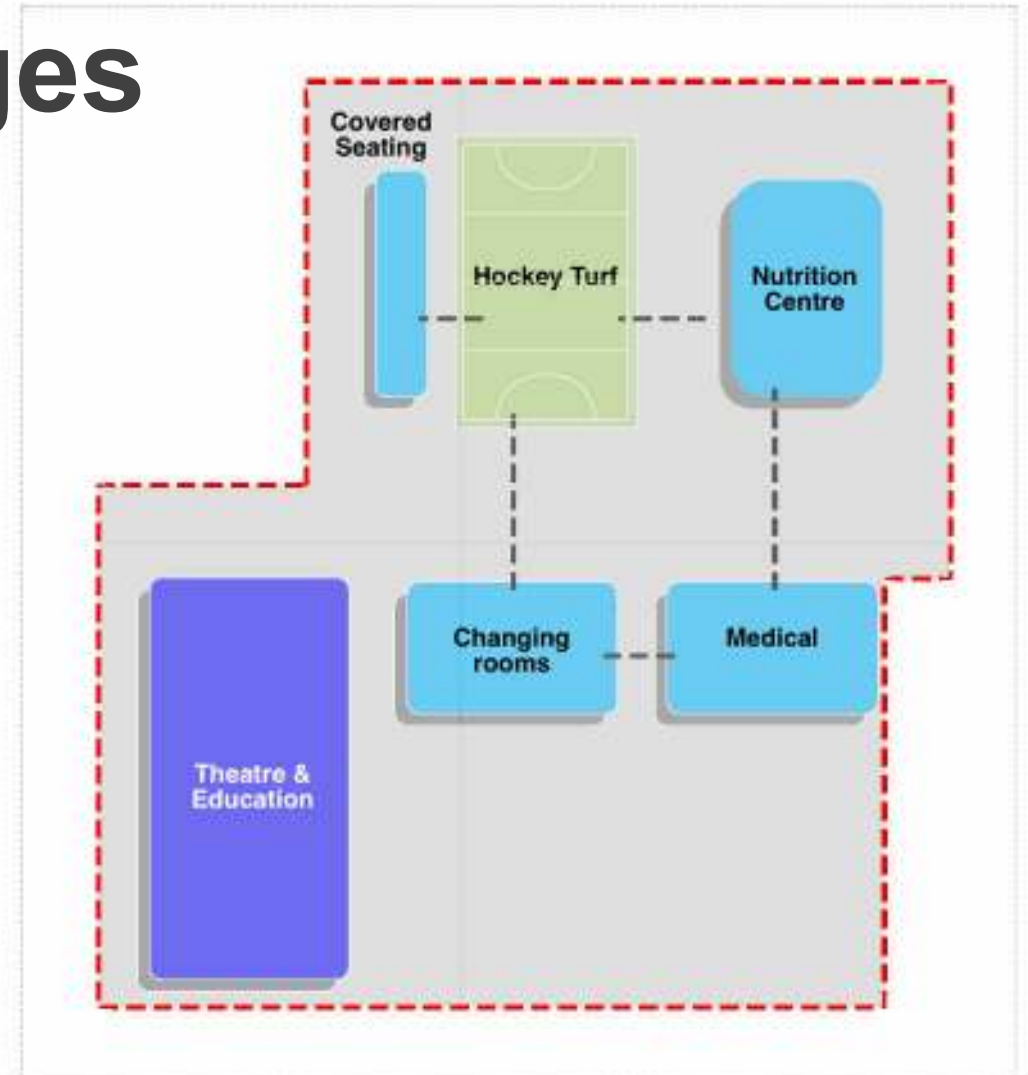
The Story

Basic Development

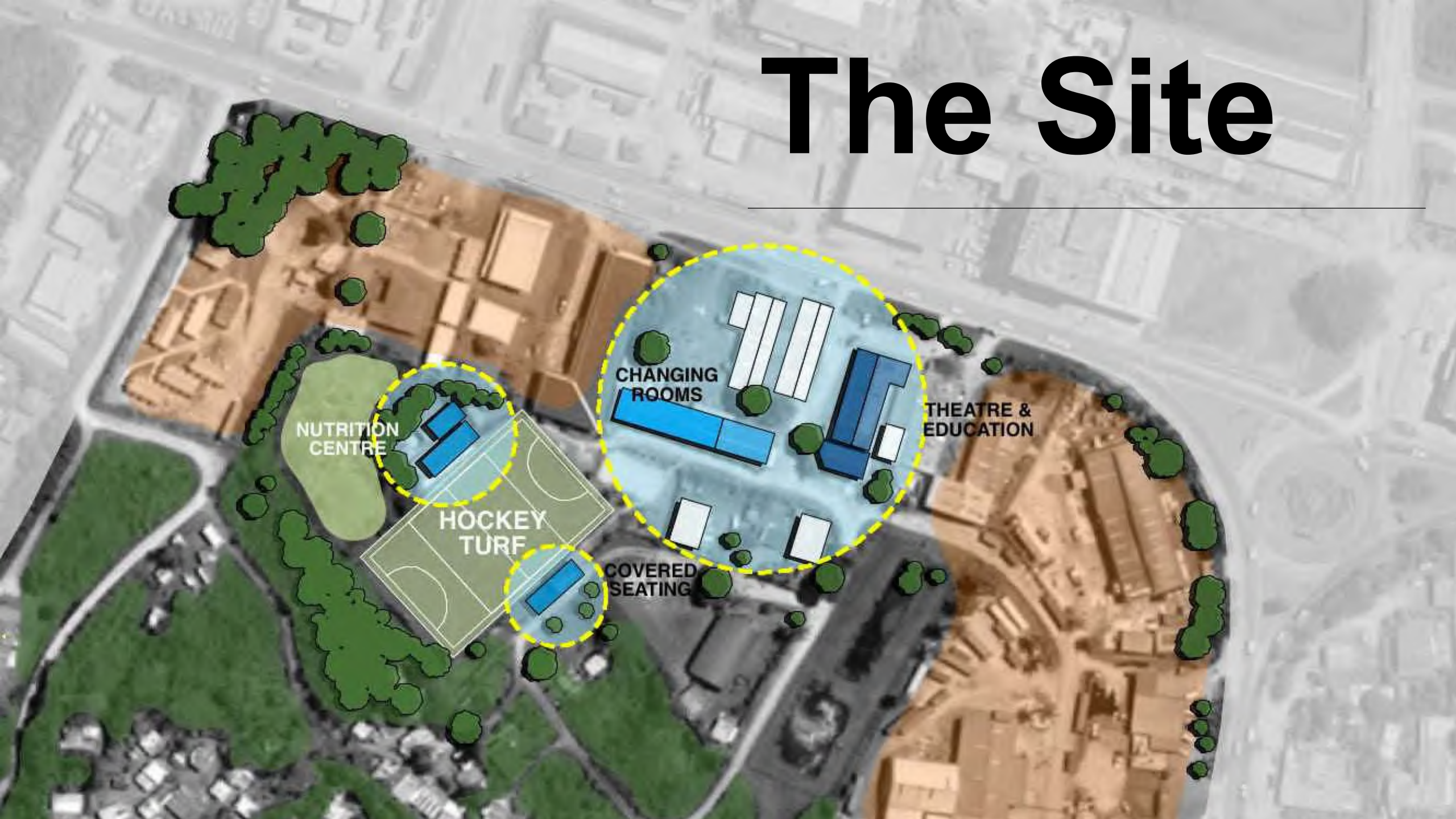
Hockey-friendly film production company connects sport, education, theatre, health, and nutrition in a less-resourced Pacific Island nation

Hockey Priority with Other Useful Stuff added around the edges

- _ Utilise existing infrastructure
- _ Funding partners split costs
- _ Hockey5s spectacular to grow numbers
- _ Strong Governance & Partners
- _ Sustainable funding sources



The Site



NUTRITION
CENTRE

HOCKEY
TURF

CHANGING
ROOMS

THEATRE &
EDUCATION

COVERED
SEATING

“Academy”

- Contracted International Coaching w/ Local Volunteer – Skillsets Increased & Retained
- Mix of activities
 - 1hr physical + 1hr numeracy + 1hr literacy
- 8-12yrs kids a.m. | 12-16yrs kids p.m.
- Lunch served up – made by locals in Nutrition Centre
- Acting + Drama + Film = Fun stuff kids are into

How Does it Happen

- Private Funding + Australian Government + OHF (FIH) + ONOC
- Can't leave all admin. & funding tasks up to Academy Coach
- 'MOU' required – ROLES | RESPONSIBILITIES | ACCOUNTABILITY
- HOCKEY priority – local access is free
- Other users (Futsal etc) pay - Equipment via other grant

Hockey Funding + External Funding Sources

1-3yrs Contracts = Sustainability

Build the Momentum

Hockey India Leadership w/ Regional Support
FIH Knowledge
Networks – National | Regional | Local
Governance

Small Steps to Help Conversations

The Process - Typical Development Phases

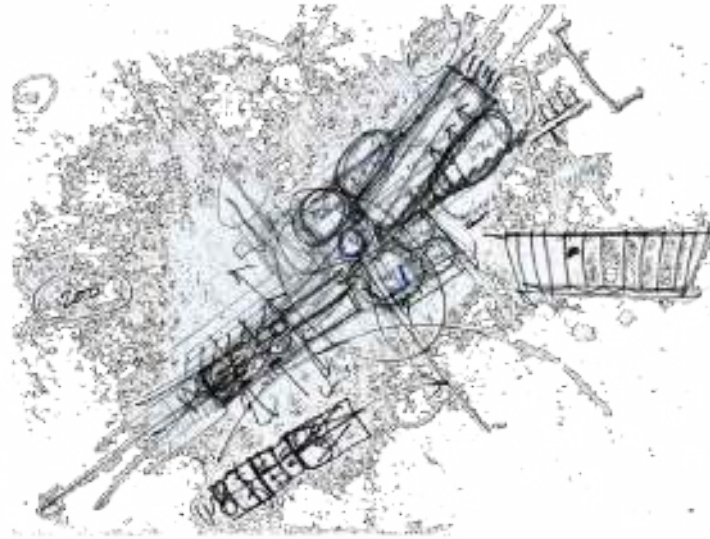


The social plan

Find Your Stories

*"The world is moving so fast that the person
who says it can't be done is generally
interrupted by someone doing it"*

– Elbert Hubbard –



s106

AUCKLAND STUDIO:

28a Ponsonby Road, Ponsonby, Auckland
+64 (0)9 972 3035
studio@studio106.co.nz
www.studio106.co.nz

WANAKA STUDIO:

Level One, Spencer House Mall
31 Dunmore St

MELBOURNE STUDIO:

134a Sydney Road, Brunswick
Victoria 3056, Australia

s106